



West Dean Church of England Primary School
 West Dean, Chichester, West Sussex, PO18 ORJ
 Telephone: 01243 811247



We do our best in all we do, with God's love.
'Love one another. As I have loved you, so must you love one another.' **John 13**

Newsletter 35 21.06.24 Our overall attendance rate is 95.5% this week.

Please read the important information about attendance and punctuality sent to you earlier this week.

Don't forget Rev Sarah's 'Rectors Ramble' which can be found at: <http://thevalleyparish.org/from-the-vicar>

Reception—September 2024

We welcomed our New Entrants for September 24 into school this week. They had a 'stay and play' afternoon with our current Year R children and Apple Class team, and will be back again for another visit next week. We look forward to you all joining us in September.

Summer dining!



Thank you to the team of willing parents who helped to put up the gazebos these week, providing shade over the picnic benches. It has been lovely that the weather is finally warm enough for the children to eat their lunch outside.

Motor Road—Road Closure, 8.00am—6.00pm, 24th—28th June

You may have noticed a sign outside school notifying of the imminent closure of Motor Road for resurfacing works. We have been assured that this will not affect access to school during these times.



The Selsey Arms
 West Dean
 Book your table now
Tuesday 9th July
7.30pm



Bingo
Cash prizes

Our **Rambling Club** took some gloves and a bag on their walk yesterday—look what they collected! Let's all do our bit to help by not dropping litter and picking up, where possible.



There also seems to be an extraordinary amount of dog mess, particularly along Centurion Way, and Mr Williams has also noticed this when walking Monty early in the morning.

Again, lets all do our bit and clear up after our dogs.



Speed in the Village:

A reminder, once again, to please adhere to the speed limit in West Dean. It has been reported that vehicles are speeding through the village, particularly at school drop off and pick up times, in spite of the presence of traffic calming devices. This includes vehicles that are arriving at and leaving our school. This is for everyone's safety, including the children at our school who are crossing the road at these busy times.

Swimming Pool:

Now that the summer seems to have arrived we are using the pool more and more and the children are loving being able to swim. However, we have had some reports of verrucas. If you know that your child has a verruca, please ensure that it is treated and your child has a Verruca sock/socks to wear while poolside and swimming.

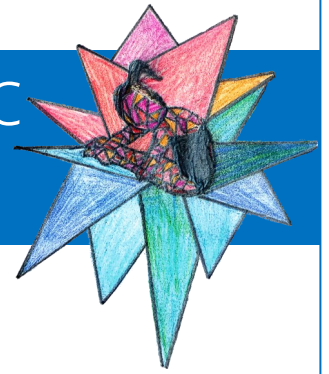
Chestnut Tree House Owl Project

Don't forget, the purpose of our recent 'Little Hoot' Owl project is to raise funds to support the incredibly valuable work of Chestnut Tree House children's Hospice. You can make a donation on our JustGiving page at:

https://www.justgiving.com/page/westdean-1710949606324?utm_medium=fundraising&utm_content=page%2Fwestdean-1710949606324&utm_source=copyLink&utm_campaign=pfp-share



West Dean CE Primary School Olympic & Paralympic Showcase



Join us for a celebration of this term's learning about the Olympic & Paralympic Games on **Monday 8th July** in a marquee on the lawn of West Dean College.

A colourful range of the children's work will be on display in the marquee and there will be short performances of song, dance and drama on the stage. The showcase gallery will be open for visitors between **5pm and 8pm**, with stage performances spread throughout the evening, starting with the youngest children. More details to follow soon.

Ticks

A parent has informed us that they found a tick on their child this week. Unfortunately, although we always look out for ticks on the children, this is an unavoidable part of being in our rural setting in the summer. Here is some advice from the South Downs National Park Authority:

Ticks are tiny spider-like creatures found in moist areas of dense vegetation or long grass in woodland, grassland, moorland, heathland and some urban parks and gardens.

They can be found throughout the year, but are most active between spring and autumn. They feed on the blood of birds and mammals, including humans.

Some ticks carry the bacteria responsible for Lyme disease, an infection that can spread to humans if bitten by infected ticks.

It is possible to reduce the risk of tick bites by following some simple advice:

- When possible, stick to footpaths and avoid long grass when walking or cycling
- Wear long sleeved shirts and trousers tucked into your socks when near tick-infested areas
- Wearing light-coloured fabrics that may help you spot a tick on your clothes
- Use insect repellent on any exposed skin
- Check your skin and clothes for ticks at the end of the day, removing any you find as soon as possible
- Regularly check your pets for ticks
- If Lyme disease is left untreated, you could develop severe symptoms. Lyme disease is treatable if caught early, so it's important to know the symptoms and look out for them.

Read full [NHS advice on ticks and Lyme disease](#).

Children's Church 11am Sunday 23rd June @ St Andrew's West Dean

Join us for songs and celebration as we decorate a scarecrow for the Weald and Downland Living Museum. Coffee and cake before the service.





Sports Sizzler

Friday 5th July

The children's sports event will be during the afternoon and the Sizzler will start at the end of the school day.

- ◆ **Parisian Olympic Bake-Off — £2 per entry on School Money from 24-05-24 (please remember your entry will be sold to raise funds after the judging)**
- ◆ **Bottle & Teddy Tombola**
- ◆ **Stalls & Games**
- ◆ **BBQ & Bar**

Please come along, join the fun and support West Dean PTA fundraising

Children's Basketry Course

Looking to get your child into healthy, stimulating activities this summer? At Makers Barn we're running a Willow Basket Making workshop with a local, professional basket maker on **10th August**. If your child is between 8 and 15 and would enjoy getting creative, working with their hands in the fresh air in a beautiful setting with an expert in her field....and 7 other young people.... then this is just what they need!

Catherine will give everyone a pre made base and the children will learn how to weave their own basket which they will take home at the end of the workshop....this workshop has four places left so if you're interested please email Rosie at info@makersbarn.co.uk

The session requires adult supervision and will begin at 12 for a 12:30 start. The cost is £85 which includes all tuition, materials and refreshments/snacks.

It'll be a great afternoon so hope to see some of you there!

Rosie x (Ava's Mum)



West Dean PTA are running several fundraisers in the next few months to raise vital funds for West Dean Primary School and we need your help!

We are looking for any donations of Wine, Beer, Spirits or Bottles please.

All donations need to be brand new, sealed and in date.
Thank you for your support!

Please leave all donations before 1pm June 13th at West Dean School Reception

SOS—Save our Sunflowers - Plea for egg shells :

Please could you save any egg shells that you may have and bring them in, washed, for our school gardens.

We're trying to keep the slugs at bay and crushed egg shells seem to be a good, environmentally friendly way of doing this.



@ the BARN on SUN 30TH JUNE

10 AM to 4PM
#thepigletcco
thepiglettcompany.co.uk

Rectory Farm Barn
Bosham, West Sussex
PO18 8QB

AA COACHING

West Dean Primary sport & activities club

Football, Hockey, Bowling, Jail Break
Dodgeball, Tag Games, Archery, Lego,
Bubble Making, Basketball, Hot Wheels,
Mini Golf and so much more...

£20 per day

TO BOOK YOUR SPACE, CONTACT BEN JOHNSON
BEN@AAACOACHING.CO.UK

Inset day sessions
9am - 4pm
Monday 22 July and
Tuesday 23 July 2024



- Yr R** *Eva* - for sharing your expert knowledge about horses and the riders equestrian skills! Well done!
- Yr 1** *Mila* - for being an all round superstar! You listen well, work your hardest and are a great role model. Well done!
- Yr 2** *Harry* - for the initiative you showed in our DT lesson yesterday. You quietly and confidently drew your Olympic medal design, well done!
- Yr 3** *Finlay* - for your brilliant attitude this week. We are amazed by the writing you have produced. Keep it up!
- Yr 4** *Jack* - for being one of our exceptional experts in geography. You have so many fascinating mountain facts to share with us!
- Yr 5** *Bea* - for your super attitude and approach to maths, we are so impressed at your positivity especially with the recent work on decimals.
- Yr 6** *Emily* - for a well written and interesting debate about the Athenians and Spartans—you considered both sides carefully, well done.



Diary Dates 2024



2023/24 INSET Days

Monday 22nd & Tuesday 23rd July 2024



Summer Term 2024 - Monday 15th April - Friday 19th July 2024

Saturday 22nd June	7.00, PTA Indian Supper Club
Monday 24th June	1.15, Year 6 Leavers' Service, Chichester Cathedral Parents and carers are welcome to join us but space is very limited and your view may be restricted.
Wednesday 26th June	1.30-2.30, New Entrants Day 2, Parents meet The Team
Thursday 27th June	GAS Sports at Boxgrove (selected children)
Thursday 27th June	Beech Class Yr 4 Big Camp & Yr 3 Adventure Days
Friday 28th June	
Monday 1st July	Apple Class visit to Lordington Lavender
Tuesday 2nd July	Maple Class visit to Lordington Lavender
Wednesday 3rd July	1.30-2.30, New Entrants Day 3, Drop and Go
Thursday 4th July	Election Day—school open as normal
Thursday 4th July	Chichester Library Summer Reading Challenge Assembly
Thursday 4th July	5.30, Full Governing Body Meeting
Friday 5th July	12.30 Opening Ceremony—Sports Afternoon
Friday 5th July	3.00 PTA Sports Sizzler Event
Monday 8th July	Paris Olympics Showcase Exhibition (details to follow)
Tuesday 9th July	Hugo Van Driel Assembly
Thursday 11th July	Goodwood Festival of Speed—school open at 8am.
Friday 12th July	Goodwood Festival of Speed—school open at 8am.
Friday 12th July	Foodbank Friday
Tuesday 16th July	Leavers' Service in school (details tbc)
Wednesday 17th July	End of Term Disco (details to follow)
Thursday 18th July	2.30, Pre-School Leavers' Festival
Monday 22nd July	9.00—4.00, AAA Coaching (School closed, Inset)
Tuesday 23rd July	9.00—4.00, AAA Coaching (School closed, Inset)
Monday 2nd September	INSET
Tuesday 3rd September	First Day back at school for the Autumn Term with new start time of 8.30.
Monday 9th September	First Day for our new Reception children (staggered start times tbc)